



146BC Bypass Door Hardware Kit - with Track

Product # 14696BC

Overall Length 96 in

Door Width Max. 48 in

DESCRIPTION

Allows doors to move easily

The Onward 146BC Bypass Door Hardware Kit with Track includes everything you need to install bypass sliding doors in your home. The kit includes a sliding door track, adjustable floor guide, four dial-adjust door hangers, two brass-plated finger pulls and fasteners. Install your doors quickly and easily using a drill and screwdriver: no other tools are required. The included parts allow you to make adjustments for different door thicknesses. The track is jump-proof and made of corrosion-resistant galvanized steel, ideal for humid environments. The kit comes in various sizes designed for use with common door widths. Simply choose a kit based on the width of your doors. This kit is also ideal if you need replacement parts to repair an older bypass door.

Use the Onward Bypass Door Hardware Kit to install bypass doors in your bathroom, closet, wardrobe, bedroom, or any other interior space. Fashionable and practical, bypass doors are also ideal for tight spaces that can't accommodate a regular hinged door.

ADVANTAGES AND BENEFITS

Dial-adjustable door hangers simplify door adjustment and alignment. V-shaped track is jump-proof and constructed of corrosion-resistant galvanized steel.

TECHNICAL SPECIFICATIONS

Product #	14696BC
Door Material	Wood
Door Movement	Straight Sliding
Track Mounting	Ceiling Mount
Load Capacity	Max. 60 lb
Door Position	Inside Frame
Door Thickness	3/4 to 1 3/8 in
Roller Type	Axle (Bushing)
Roller Position	Upper
Application	Closet and Walk-In Closet, Storage
Brand	Onward
Screw/Nail Included	Yes
Packaging Format	Box
Manufacturing Material	Steel
Finish	Zinc
Soft-Closing	No
Product type	Bypass Top Roller
Groove Needed for Guiding System	No
Overall Width	1 in
Door Installation	Top Hung
Number of Doors	2
Door Height	36 to 98 in

INCLUDED PRODUCT(S)

Each kit includes: 1 sliding door track 1 adjustable floor guide 4 dial-adjust door hangers 2 brass plated finger pulls Necessary fasteners

IMPORTANT INFORMATION

Pictures provided for visual reference only: actual product may vary. All required hardware should be ordered and obtained prior to initiating fabrication or installation work. Please verify that the parts and quantities listed in your order are correct before proceeding to checkout. Always use instructions provided by the manufacturer, as included with the product. Manufacturer reserves the right to amend, modify, or otherwise supplement any previously issued product and/or technical information, as deemed required from time to time, without prior notice. The documentation, drawings, and instructions on this page apply to the system described on this page only. Richelieu expressly declines all responsibility for any design or construction that combines this system with systems from this same manufacturer or systems from other manufacturers. Installation of the product shall be executed by qualified individuals only, always ensuring that each product is securely installed using proper fixation methods, as appropriate for each applicable substratum. We trust that anyone installing these products has the required skills, knowledge, and experience. Richelieu expressly disclaims any liabilities for results obtained through improper use or installation. Always remove debris/dust/residue (sawdust and/or aluminum) from all tracks and guide channels using a dry cloth during installation and before operating the system. Never spray lubricant.

DISCLAIMER

By accessing or referring to this document, or by using any of Richelieu's websites, you accept all applicable terms as they apply from time to time. This legal disclaimer is in no way limited or altered by any other terms or conditions. Richelieu may change said terms at its discretion and without prior notice. A version of the most current terms will always be available on Richelieu's website. The preceding information and technical documentation, information, or recommendations issued by Richelieu verbally or in writing is believed to be accurate and is given in good faith, but no representation of warranty as to its completeness or accuracy is made. Suggestions for use or application are only opinions. Users are responsible for determining the suitability of these products for their own particular purpose. No representation of warranty, expressed or implied, is made with respect to information or products including, without limitation, warranties or merchantability, fitness for particular purpose, non-infringement of any third party patent or other intellectual property rights including, without limit, copyright, trademark, and designs. Any trademarks identified herein are trademarks of the Richelieu group of companies. Richelieu assumes no risk and shall not be subject to any liability for damages or loss resulting from the specific use or application made of the product. Richelieu's liability for any claim, whether based on breach of contract, negligence, or infringement of any rights of any party relating to the product shall not exceed the price paid for said products. In no event shall Richelieu be liable for any special, incidental, or consequential damages (including loss of use, loss of profit, and claims of third parties) however caused, whether by the negligence of Richelieu or otherwise. Products returned for warranty purposes shall be subject to Richelieu's then applicable Return Policy.

PRODUCT PHOTOS







For two bypass doors with a total width of 96"
Pour 2 portes coulissantes totalisant 96 po de large (2,44 m)



×1 96" track
rail de 96 po (2,44 m)



×4 dial-adjust door hangers
supports réglables par cadran



×2 satin chrome finger pulls
poignées encastrées rondes
en chrome satiné



×16 1-1/2" screws
vis de 38 mm



×1 adjustable floor guide
guide au sol réglable



×2 5/8" screws
vis de 16 mm



×4 5/8" nails for finger pulls
clous pour poignées
encastrées 16 mm



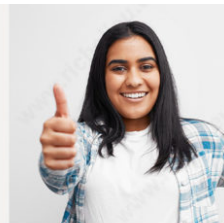
×8 5/8" screws
vis de 16 mm



Required tools: Drill, hammer, screwdriver
Outils requis : perceuse, tournevis, marteau



Easy to install
See instructional video



Includes all
necessary hardware



Various sizes to fit
common door widths

