



Pocket Door Pull - Round

Product # 17RC42

Color/Finish Chrome

Function Privacy

Packaging format Per unit

DESCRIPTION

Compatible with left-hand and right-hand doors

Designed for use on most types of doors, this pocket door pull is available in a variety of finishes to suit any design. Easy to install and a great option for many doors.

TECHNICAL SPECIFICATIONS

Product #	17RC42
Door Type	Wood
Usage	Pocket Door
Door Thickness	1 3/8 in
Diameter	2 7/16 in*
Screw/Nail	Included
Fixing Technique	Flush
Input Distance	2 3/8 in
Handing Position / Opening Side	Reversible for Left or Right
Height	2 7/16 in*
Width	2 7/16 in*
Length	3 1/2 in
Material	Steel

Disclaimer

Measures shown with an asterisk (*) have been converted as per your preference. These are not the official measures. To view the measures specified by the manufacturer, [click here](#).

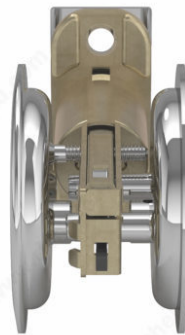
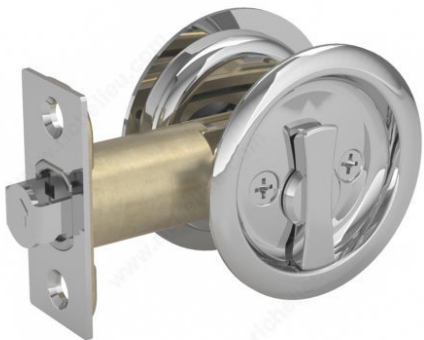
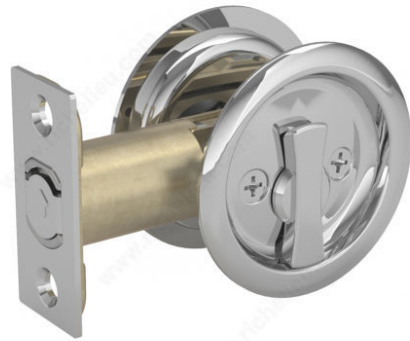
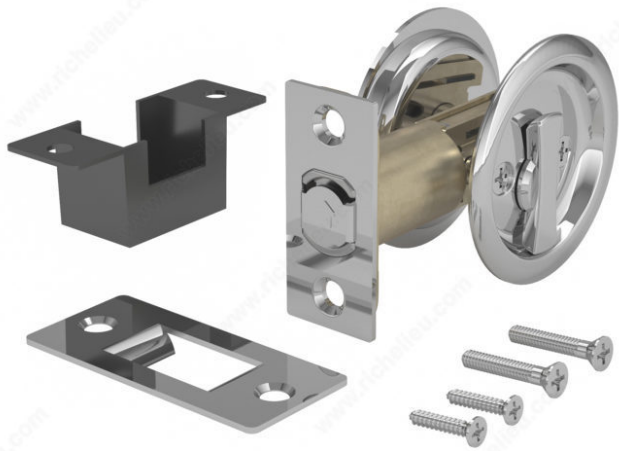
APPLICATION

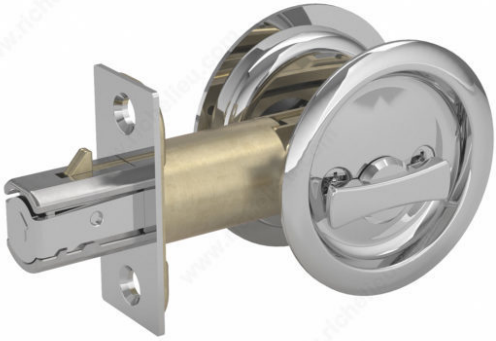
For residential use only.

DISCLAIMER

Includes 2-3/8" (60 mm) non-adjustable backset (2-3/4" (70 mm) backset latch sold separately)

PRODUCT PHOTOS





Privacy and Passage models available
Modèles d'Intimité et de Passage disponibles

