



## Pocket Door Pull - Square

**Product #** 17SNB10

**Color/Finish** Brushed Nickel

**Function** Passage

**Packaging format** Per unit

### DESCRIPTION

**Compatible with left-hand and right-hand doors**

Designed for use on most types of doors, this pocket door pull is available in a variety of finishes to suit any design. V ery easy to install and a great option for many doors.

### TECHNICAL SPECIFICATIONS

<b>Product #</b>	17SNB10
<b>Door Type</b>	Wood
<b>Usage</b>	Pocket Door
<b>Door Thickness</b>	1 3/8 in
<b>Thickness</b>	1 25/32 in*
<b>Depth - Overall Dimensions</b>	3 19/32 in*
<b>Screw/Nail</b>	Included
<b>Fixing Technique</b>	Flush
<b>Input Distance</b>	2 3/8 in
<b>Handing Position / Opening Side</b>	Reversible for Left or Right
<b>Strike Plate Height</b>	2 7/16 in*
<b>Height</b>	2 7/16 in*
<b>Width</b>	2 7/16 in*
<b>Material</b>	Steel

#### Disclaimer

Measures shown with an asterisk (\*) have been converted as per your preference. These are not the official measures. To view the measures specified by the manufacturer, [click here](#).

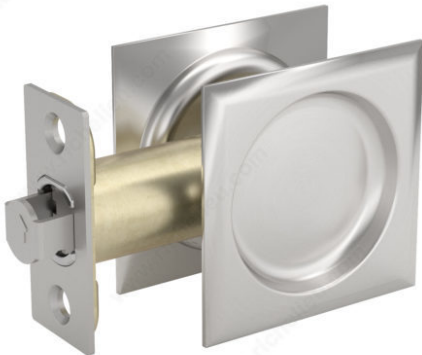
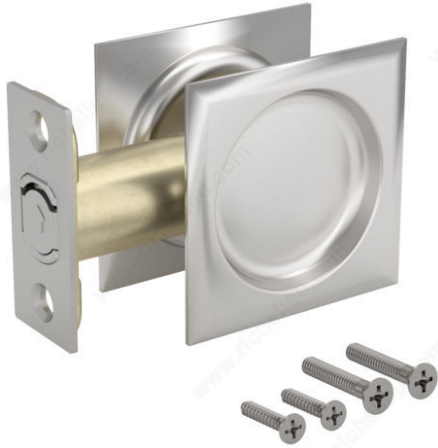
### APPLICATION

For residential use only.

### DISCLAIMER

Includes 2-3/8" (60 mm) non-adjustable backset (2-3/4" (70 mm) backset latch sold separately)

PRODUCT PHOTOS





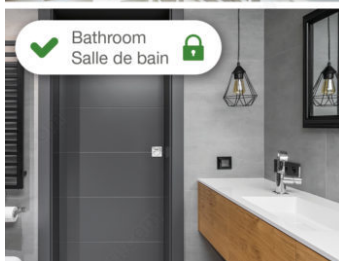
**Privacy and Passage models available**  
**Modèles d'Intimité et de Passage disponibles**



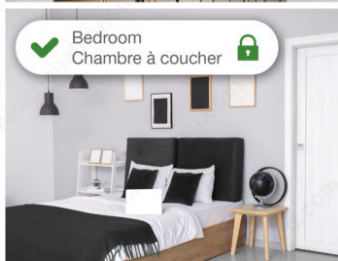
✓ Closet  
Garde-robe



✓ Dining Room  
Salle à manger



✓ Bathroom  
Salle de bain



✓ Bedroom  
Chambre à coucher

