



Single Axis Box Rail Hanger with Ball Bearings and Short Threaded Mounting Pin

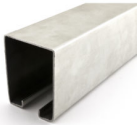
Product # 24651385XV

DESCRIPTION

This product is designed for box rail sliding doors. The rod/pin is removable. Thread size is 7/16" -- 14. Wheel Diameter is 46.5 mm.

REQUIRED PRODUCTS

Requires ONE of the following products



Heavy-Duty Galvanized Steel Box Rail

OR



Heavy Duty Galvanized Steel Box Rail with Flashing

TECHNICAL SPECIFICATIONS

Product #	24651385XV
Product type	Trolley, Track, Box Track
Door Movement	Movable Wall
Detailed Door Movement	Stacking
Door Material	Aluminum/Metal Frame, Wood
Door Thickness	1 1/2 to 3 1/2 in
Number of Doors	1
Roller Type	Ball Bearing
Overall Length	2 25/32 in*
Finish	Zinc Plated
Load Capacity	Max. 450 lb
Overall Height	23/32 in*
Manufacturing Material	Steel
Application	Barn Door

Disclaimer

Measures shown with an asterisk (*) have been converted as per your preference. These are not the official measures. To view the measures specified by the manufacturer, [click here](#).

APPLICATION

Industrial sliding garage and barn doors.

IMPORTANT INFORMATION

Place hangers to distribute door weight evenly, keeping a minimum of 3" from the door edges. If door panels are more than 16' wide, use 3 hangers per panel. Note: Picture for visual reference only: actual product may vary from that shown in photo. Be sure to order hardware before beginning fabrication or installation work. Always use the instructions inside the packaging provided by the manufacturer, as the manufacturer reserves the right to make technical changes or modify information without prior notice. All technical drawings and documents contain examples of the assembly of different suppliers' hardware. The customer cannot base any claims on the use of these documents. No responsibility is assumed for design details relating to a particular construction project. At all times, execution and installation must be undertaken by qualified persons. Never exceed the maximum weight or the maximum dimensions recommended by the manufacturer. Always be sure to install the product correctly using the right fasteners for your materials. Never use any spray lubricant on these products.

DISCLAIMER

The preceding information, as well as any technical recommendations given in writing, verbally or based on tests, is provided to the best of our knowledge. However, they are non-binding recommendations only and do not affect your responsibility to determine the correctness of given recommendations and suitability of the product for your particular purposes. The application, use or processing of our products as well as the production of products based on our technical recommendations are beyond our control and therefore fall exclusively in your area of responsibility. Sales of our products are subject to our most recent General Sales and Delivery Conditions. Please note that Richelieu will not accept any returns or claims for unpackaged products.

PRODUCT PHOTOS

