



Box Rail Door Hanger Hardware Kit

Product # 24651386XB

Roller Type Axle (Bushing)

Packaging format Box

DESCRIPTION

Brackets and hangers for box rail.

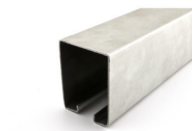
Brackets and hangers for one door. Complete with multiple products needed for finishing up that room you have been wanting to get to. Easy installation.

ADVANTAGES AND BENEFITS

Vertical adjustment is made by turning the lock nut on the top of the hanger with a wrench. Lateral adjustment is made through the slot in the apron.

REQUIRED PRODUCTS

Requires the following products



Heavy-Duty Galvanized Steel Box Rail

TECHNICAL SPECIFICATIONS

Product #	24651386XB
Product type	Track, Box Track
Brand	Onward
Detailed Door Movement	Single sliding
Door Material	Aluminum/Metal Frame, Wood
Door Position	In Front of Wall
Track Mounting	Wall Mount
Roller Position	Upper
Door Thickness	1 1/2 to 3 1/2 in
Number of Doors	1
Overall Length	72 to 144 in
Track type	Single
Finish	Zinc Plated, Galvanized
Adjustable	Yes
Load Capacity	Max. 450 lb
System	Heavy Load (150 kg+)
Groove Needed for Guiding System	No
Screw/Nail Included	Yes
Manufacturing Material	Steel
Application	Barn Door

APPLICATION

Garage, sliding barn door, industrial door track

INCLUDED PRODUCT(S)

- 4 side mounting rail brackets with lag bolts - 2 double axle hangers for box rail

IMPORTANT INFORMATION

Place the brackets to ensure uniform distribution of door weight with a minimum distance of 3 in from the ends. If door panels are more than 16 ft wide, use 3 brackets per panel. Note: Picture for visual reference only: actual product may vary from that shown in photo. Be sure to order hardware before beginning fabrication or installation work. Always use the instructions inside the packaging provided by the manufacturer, as the manufacturer reserves the right to make technical changes or modify information without prior notice. All technical drawings and documents contain examples of the assembly of different suppliers' hardware. The customer cannot base any claims on the use of these documents. No responsibility is assumed for design details relating to a particular construction project. At all times, execution and installation must be undertaken by qualified persons. Never exceed the maximum weight or the maximum dimensions recommended by the manufacturer. Always be sure to install the product correctly using the right fasteners for your materials. Never use any spray lubricant on these products.

DISCLAIMER

The preceding information, as well as any technical recommendations given in writing, verbally or based on tests, is provided to the best of our knowledge. However, they are non-binding recommendations only and do not affect your responsibility to determine the correctness of given recommendations and suitability of the product for your particular purposes. The application, use or processing of our products as well as the production of products based on our technical recommendations are beyond our control and therefore fall exclusively in your area of responsibility. Sales of our products are subject to our most recent General Sales and Delivery Conditions. Please note that Richelieu will not accept any returns or claims for unpackaged products.

PRODUCT PHOTOS

