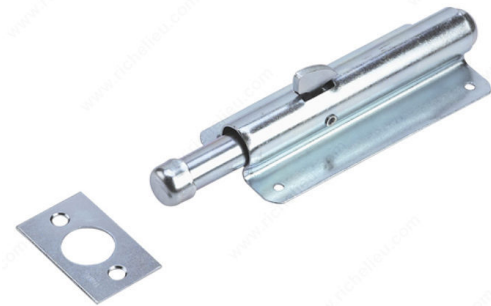


Foot Bolt

Product # 569XR

DESCRIPTION

Generally used for securing double doors, this foot bolt enables you to have your doors remain in an open or closed position as long as the lock is in place. Easy to install. Very slick and smooth design.



TECHNICAL SPECIFICATIONS

Product #	569XR
Length	6 in
Color/Finish	Zinc
Material	Steel
Screws	Included

PRODUCT PHOTOS

