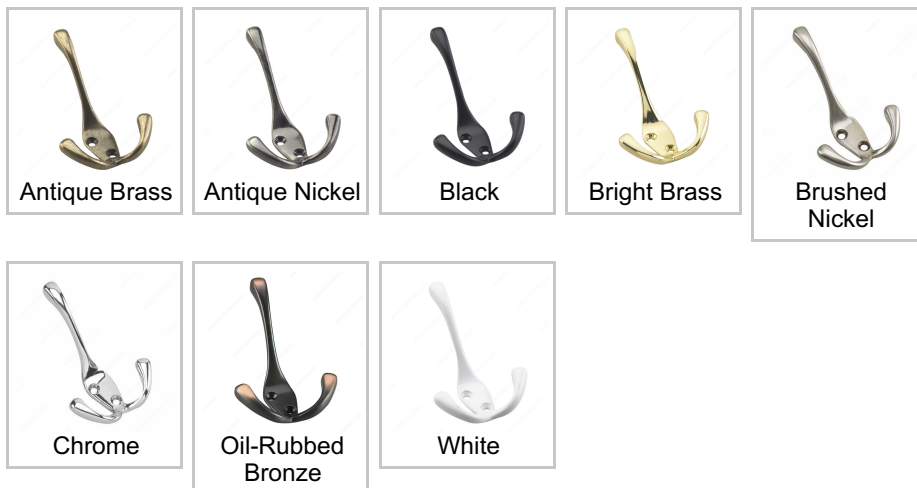




4 inch Heavy Duty Triple Coat Hook - 236

Finish



DESCRIPTION

This heavy-duty triple coat hook features a stylish finish that will accent any space. The three-arm design triples your storage potential, providing an elegant and unique way to organize more of your accessories. Simple and functional, this convenient metal hook will bring order to any room. Ideal for bedrooms, bathrooms, entryways, mudrooms, closets, and anywhere else hooks are required. Can be installed on walls or doors.

AVAILABLE PRODUCTS

| Product # | Finish |
|-----------|-------------------|
| 236ABV | Antique Brass |
| 236ANV | Antique Nickel |
| 236FBV | Black |
| 236BV | Bright Brass |
| 236NBV | Brushed Nickel |
| 236CV | Chrome |
| 236ORBv | Oil-Rubbed Bronze |
| 236WV | White |

TECHNICAL SPECIFICATIONS

| | |
|---------------------------------|---------------|
| Hook Style | Utility |
| Material | Metal |
| Load Capacity | 22 lb* |
| Width - Overall Dimensions | 2 25/32 in* |
| Screw/Nail | Included |
| Hook Model | Multiple Hook |
| Height - Overall Dimensions | 3 27/32 in* |
| Projection - Overall Dimensions | 2 1/4 in* |

Disclaimer

Measures shown with an asterisk (*) have been converted as per your preference. These are not the official measures. To view the measures specified by the manufacturer, [click here](#).

APPLICATION

For maximum loading capacity, hooks should be mounted directly to wall studs, which are generally found at 16" intervals. If hooks are not mounted to studs, use appropriate dry-wall anchors (not included with hooks). Hooks come with plastic anchors that may not adhere to all type of walls. The installer is responsible for ensuring that appropriate anchors are used.

DISCLAIMER

Although our oil-rubbed bronze finish is achieved by means of a rigorous production process, it may show signs of normal wear faster than other finishes.

PRODUCT PHOTOS

